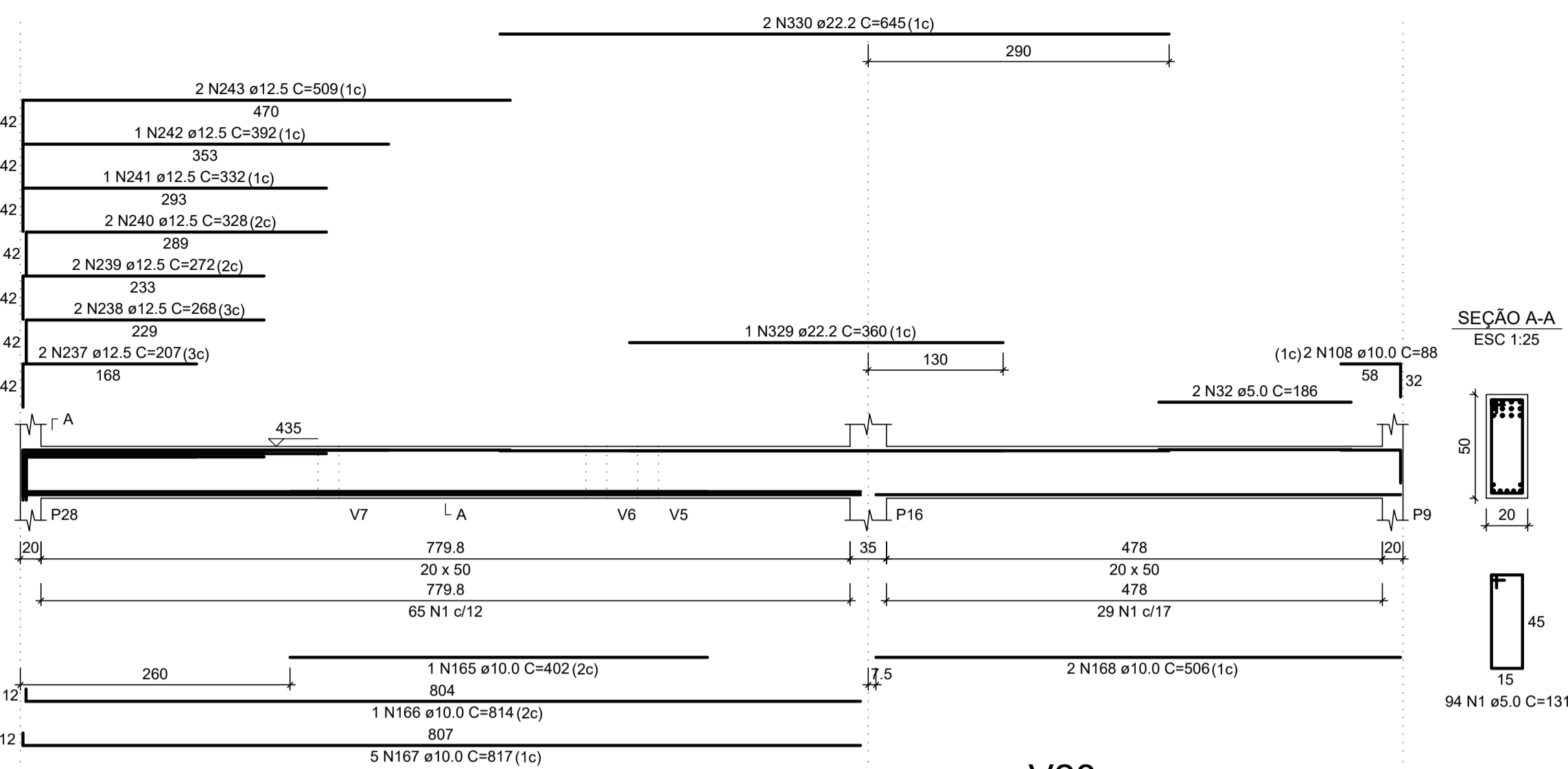
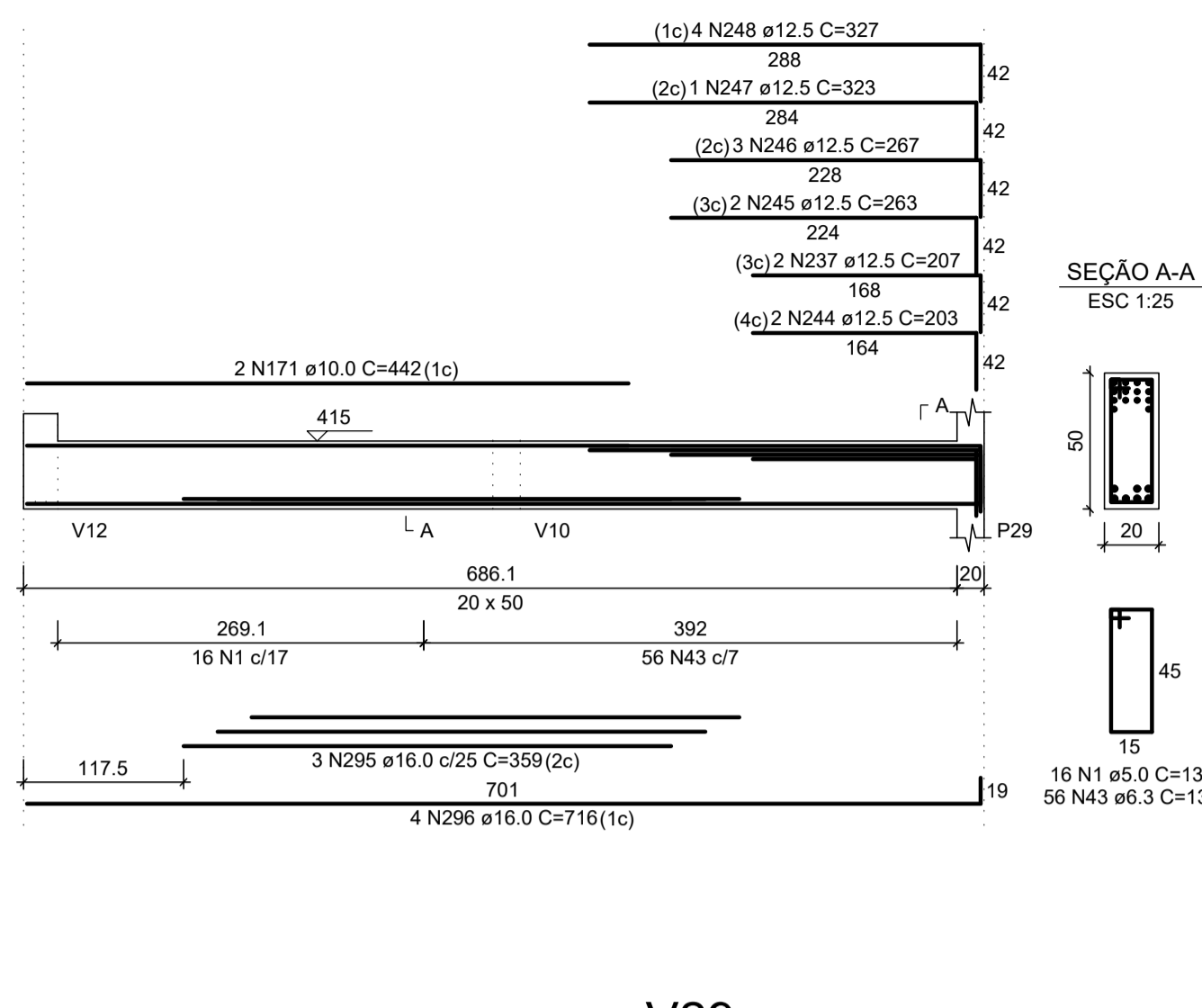


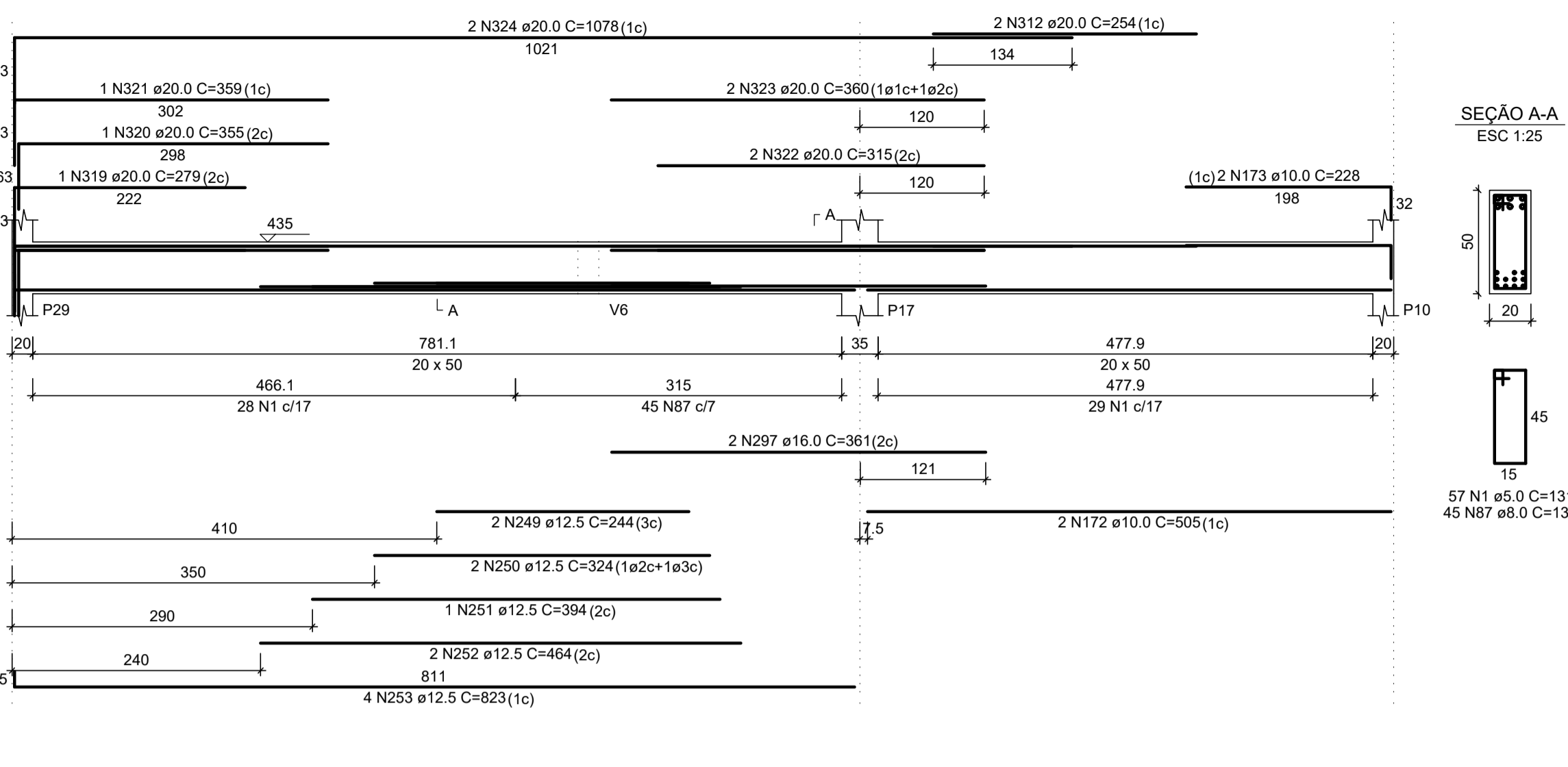
V21
ESC 1:50



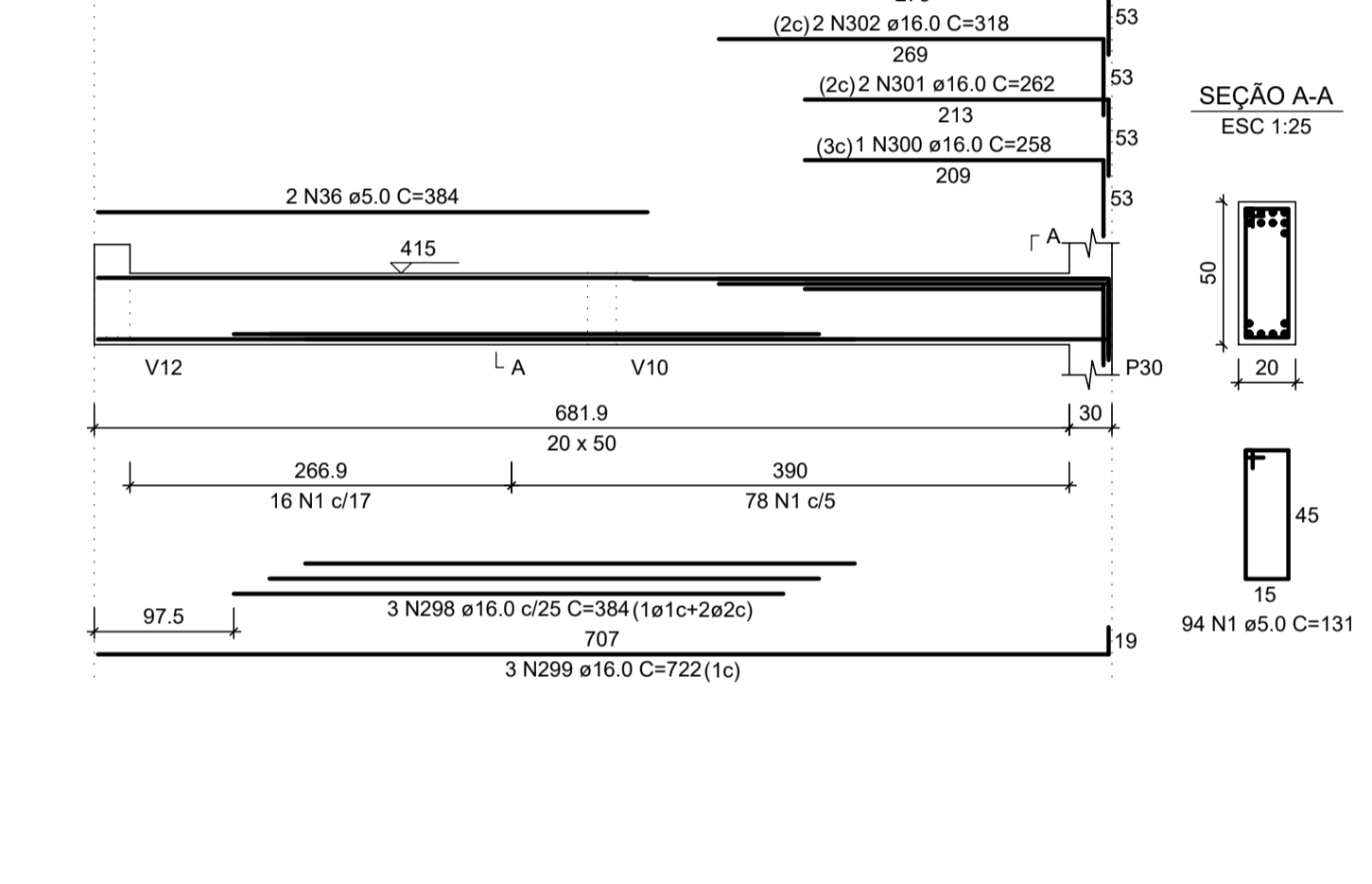
V23
ESC 1:50



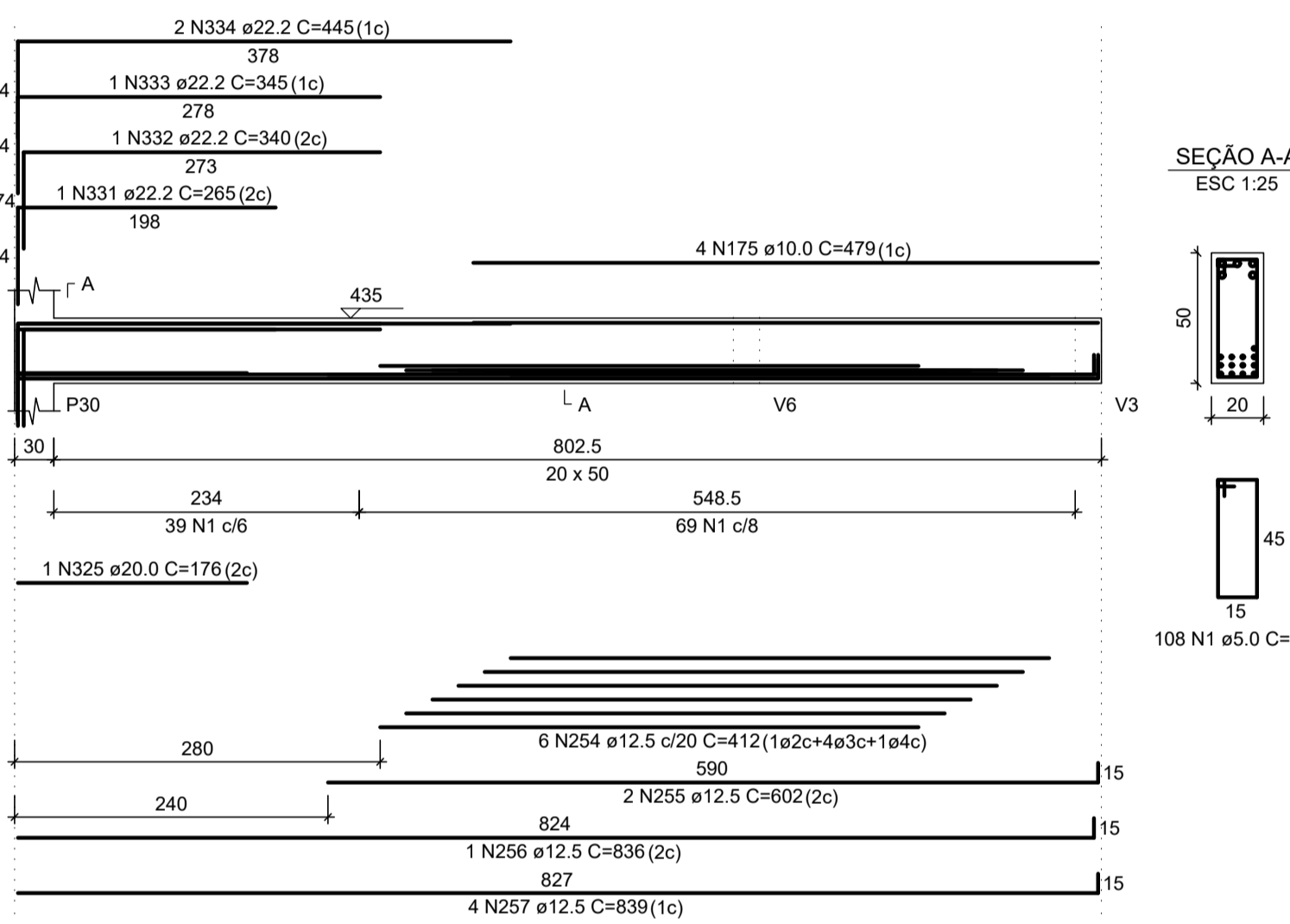
V24
ESC 1:50



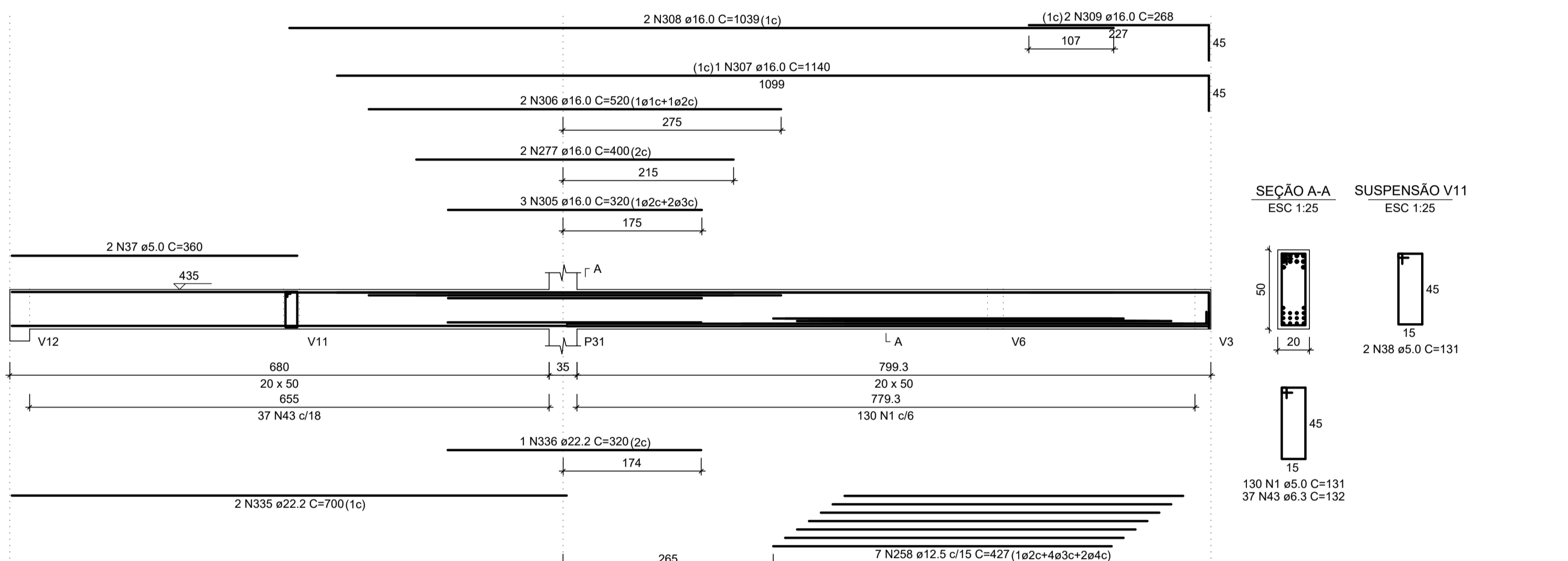
V27
ESC 1:50



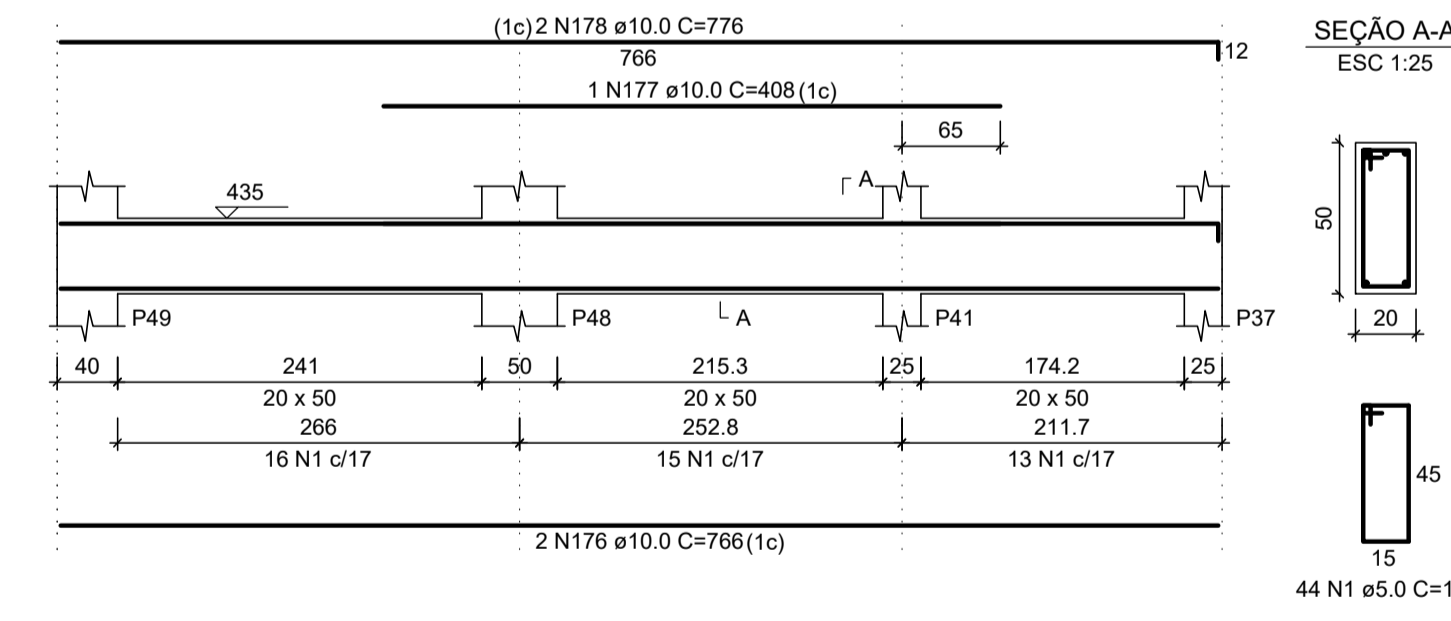
V28
ESC 1:50



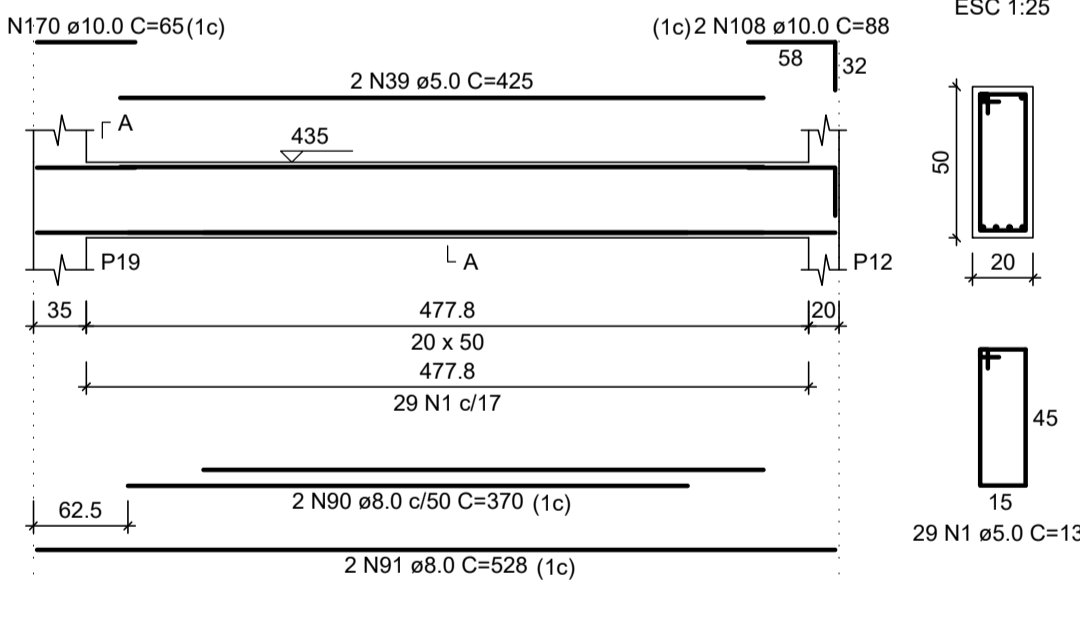
V29
ESC 1:50



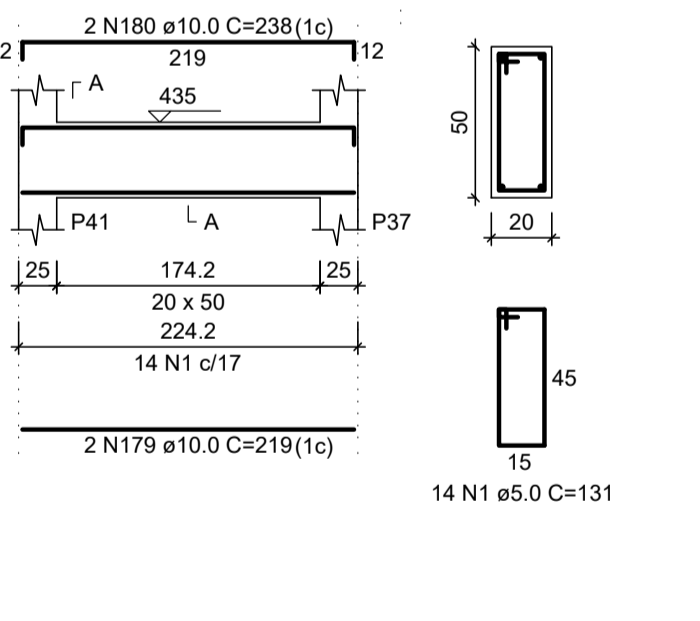
V30
ESC 1:50



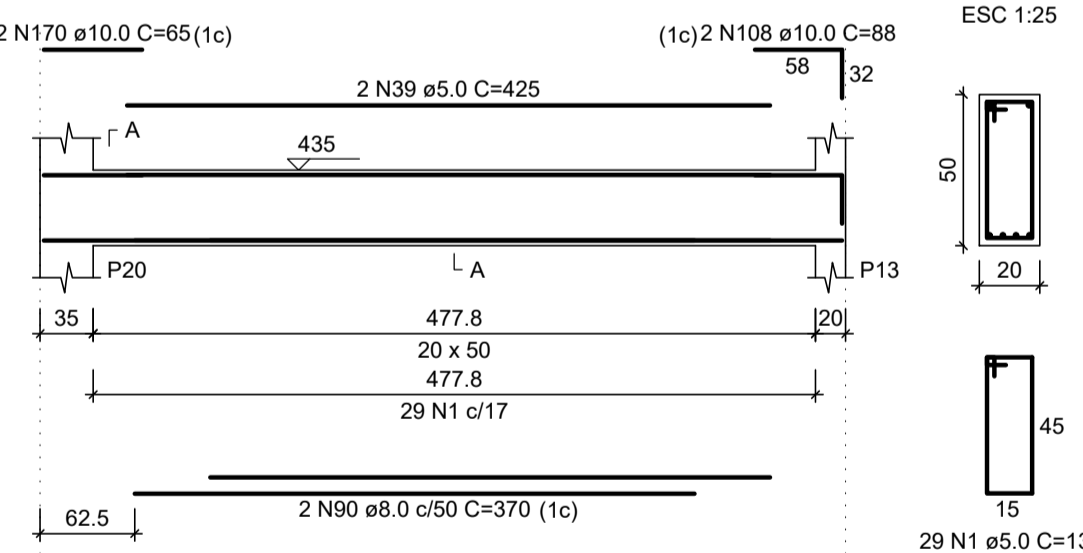
V31
ESC 1:50



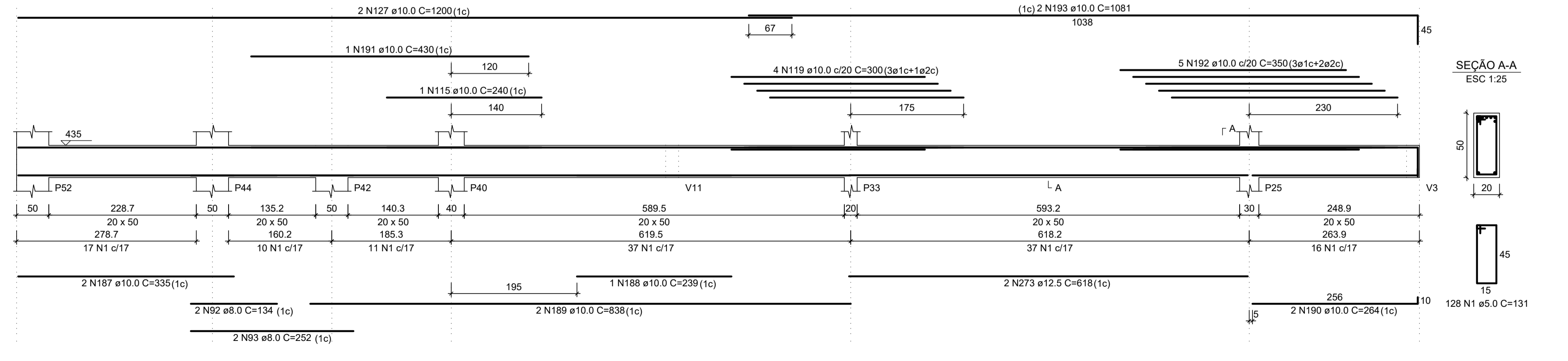
V32
ESC 1:50



V34
ESC 1:50



V35
ESC 1:50



Armação Viga Escala 1:50

| ESPECIFICAÇÕES | | | |
|------------------|-----------------------|--------------------------------------|--|
| Carga | Concreto | Aços | Execução |
| sobre carga útil | 400kg/m ² | fck=30mpa | de acordo com as normas estruturais brasileiras verificar cotas na obra |
| alvenaria | 1200kg/m ² | | |
| revestimentos | 50kg/m ² | | |
| enchimentos | ----- | CA 50A fyk 5000kg/cm ² | em caso de dúvida consulte o resp. técnico |
| coberturas | 50kg/m ² | CA 60 fyk 6000kg/cm ² | |

PROJETO ESTRUTURAL

Prancho 21/30

Obra: Câmara Municipal de Fazenda Rio Grande

Local: Rua Farid Stephens, 173 - Bairro Pioneiros - Fazenda Rio Grande - Pr

PROPRIETÁRIO: Câmara Municipal de Fazenda Rio Grande

Referência: SUPERIOR: Armação 04/05

Data: 07/02/2019 Projeto

Escala: Indicada Eng. Civil - Adelson Luiz Klem
CREA - MS 1.064 / D. Vito 64069 - Pr